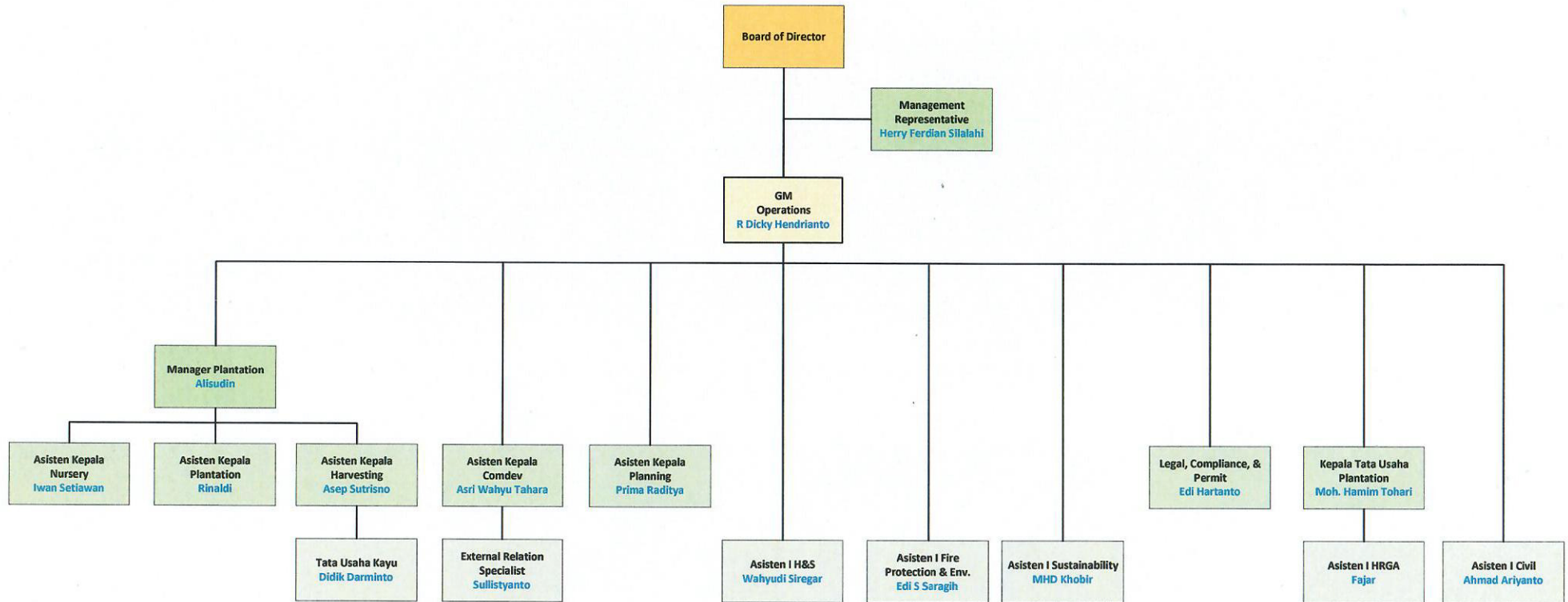




**Organization Chart
PT Malinau Hijau
Lestari**



No Doc : 002/SITE/MHLGROUP-SO/IFC/XII/2025
Effective Date : 1 December 2025
Rev : 1
Level :-
Note :-

Approved by:

Dominicus Wimbuh W. Ir.
President Director
PT Malinau Hijau Lestari